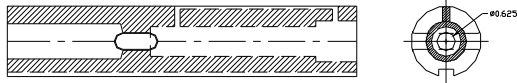


### 1. Gear Box: What is semi universal gearbox?

Norton Gearbox is now out of date because it is basically a brutish design so it provides more thread range of Inch but it is not suitable gearbox for Metric threads. **Universal Gearbox** is designed recently by AGMA (American Gear Manu. Association) for Metric (Module) & Inch (D.P.), in short world's all standard thread possible without changing of change gear so it is really time saving equipment. **You can also make any special (unusual) thread with this gearbox.** This "Any Special Thread" function cannot provide by any Norton type gearbox with please note.

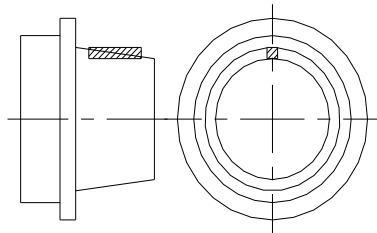
*\*Semi Universal Gear Box is a small version of universal gearbox so it does not provide D.P. & Module Thread.*

### 2. What is tang shank?



Tail stock spindle is tang shank type for hassle free heavy drilling on lathe machine. As you know most of machine comes with ordinary tail stock spindle. Those lathe machines are not capable for doing heavy drilling. All heavy drill shank comes with tang so if you want to do heavy drilling your machine must have tang shank type tail stock spindle. In "Banka" we provide Case Hardened & Precision ground *Tail Stock Spindle* which maintain its accuracy life long. A technological marvel promises to bring you in high production, low maintenance and Eco friendly environment in your workshops.

### 3. What is American Loo Type Spindle Nose?

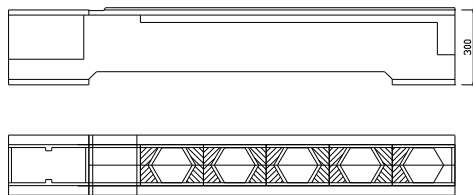


There is some very famous spindle nose in machine tools design which is

- (1) A2 type (Not Quick Change),
- (2) Cam Lock type D-1 (Very Costly)
- (3) **Loo type,**
- (4) **Threaded Type (Suitable for Cone Pulley Lathe)**

Loo type spindle nose is in some of very suitable spindle nose in all kinds. It provides super performance in high-speed running and also it is easy to replace chucks (Hold - Release) so it calls **Quick-change spindle nose.**

### 4. Bed



Bed design is hyperbolic type, robust & heavily ribbed rectangular wide openings facilitate easy chip disposal. 300mm bed height for taking maximum load.

- \* **Easy Chip Removal** \* **Rigid Constriction**
- \* **Hexagonal View**
- \* **Hyperbolic Bridge**
- \* **We provide specially designed heavy wide legs for 375mm wide bed. 3Nos. for 1500mm & 4Nos. for 2500mm see Our Model 60**

### 5. Why Extra Feed Road?

It is for extra threading pitch accuracy and durability of leading screw and apron half nut.

**6. Apron:** Leaver Type Easy Clutch system for automatic feed.

**7. Quick Change Tool Post:** It is time saving equipment when multiple tooling is using on one job.

**8. TUCITE B Linear Bearing System:** It is applied between Bed & Carriage surface for smooth sliding and long life of Bed Guide ways Accuracy.

**9. Machine Weight:** All Gear Lathes are run on a high speed, so its weight affects its accuracy and steadiness.

## 10. Case Hardened Gears:

(1) **Nitrate Hardened Gear:** It is only a coating applied on gear's surface, so it does not give strength. It's durability only 900 Hours with full load.

(2) **Case Hardened Gear:** It is applied into material surface till 1 to 1.5 mm and gives full strength against bending / breakage of gear teeth minimum 10 to 12 years. We used 20MnCr5 material, applied this process on Gears, Spindle, Lock Nuts, and Spline Shaft.